

Quiz

WHAT IS YOUR DIAGNOSIS?

A 70-year-old male presented with persistent headaches. A magnetic resonance imaging revealed a left parieto-occipital extra-axial lesion characterized by a dyshomogenous iso-intense signal in T1, iso-intense signal in T2, and a large central and peripheral component in T2 with low signal, possibly indicating a partly calcific matrix. The lesion exhibited dyshomogenous contrast enhancement, with areas along the ependymal surface of the ventricle in the peritrigonal location, and showed evident thickening of the dural lining in the posterior third of the falx cerebri and superior sagittal sinus, suggestive of infiltrative behavior.

Histological examination revealed a proliferation with markedly increased cellularity and a compact pattern of medium to large, slightly elongated cells with discrete nuclear pleomorphism and focal brownish pigmentation. Scattered lipoblastic/lipoblast-like elements were also noted (Figure 1, inset). The lesion demonstrated brain parenchyma infiltration and leptomeningeal spread, confirming the neuroradiological suspicion. A further microscopic study with histochemical staining for Prussian blue was positive, and immunohistochemical analyses revealed positivity for EMA and progesterone, while S100 was negative (Figure 2). The lesion was also negative for glial fibrillary acidic protein and Olig2.

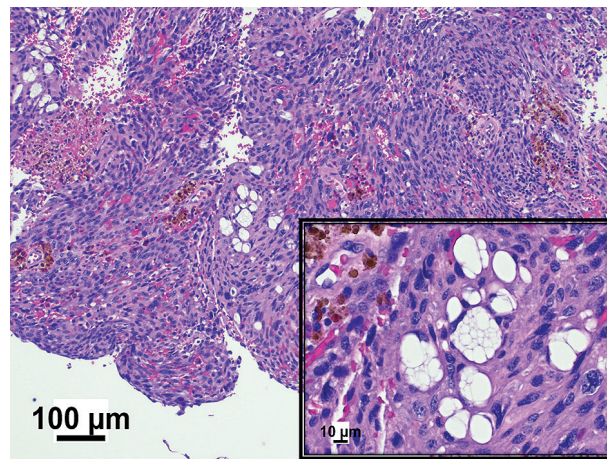


Figure 1.

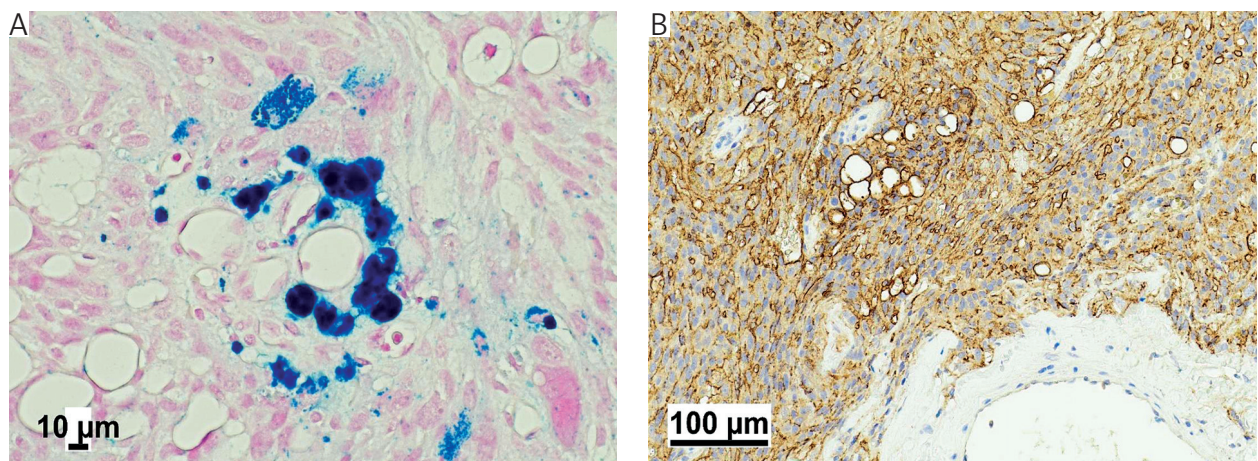


Figure 2.

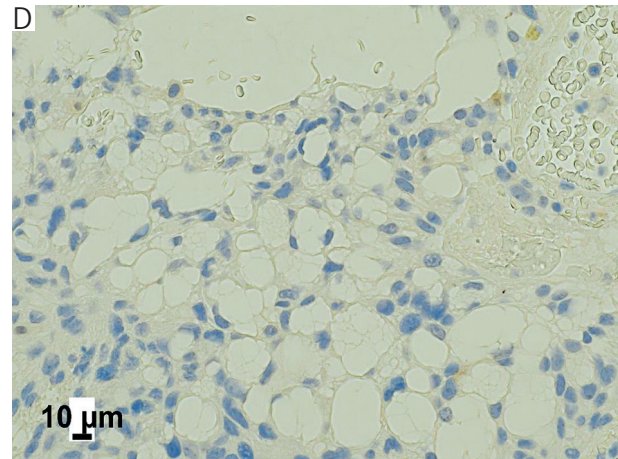
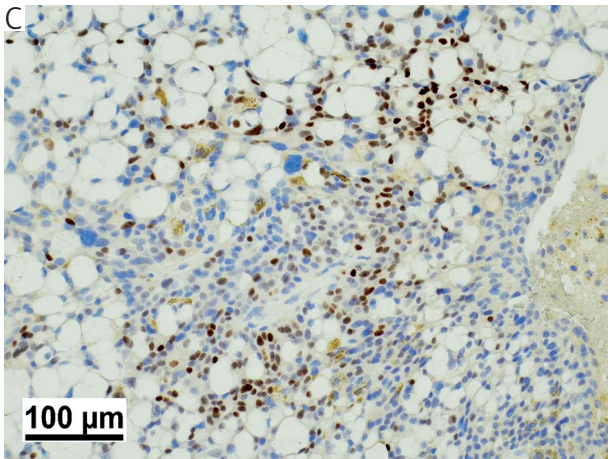


Figure 2. Cont.

Gabriele Gaggero¹, Klea Remzi², Valerio Gaetano Vellone¹, Giulio Fraternali Orcioni³

¹Pathology Unit, IRCCS Istituto Giannina Gaslini, Genoa, Italy

²Department of Integrated Surgical and Diagnostic Sciences (DISC), Division of Anatomical Pathology, Scuola di Scienze Mediche e Farmaceutiche, Università di Genova, Genoa, Italy

³S.C. Anatomia Patologica, A.O. Santa Croce e Carle, Cuneo, Italy

Answers should be sent to the Editorial Office until . The correct answer will be announced in the next issue of the *Polish Journal of Pathology*.