

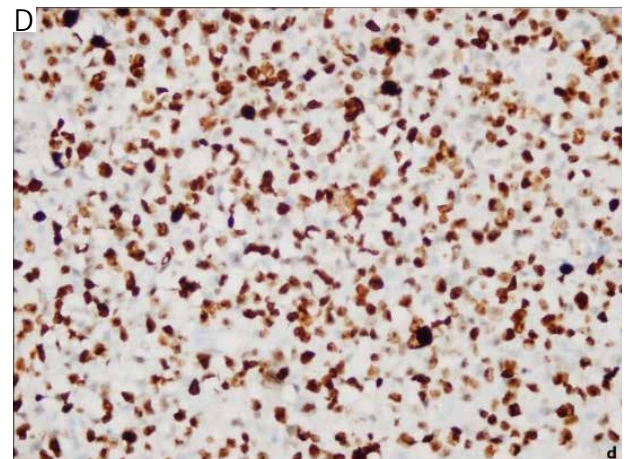
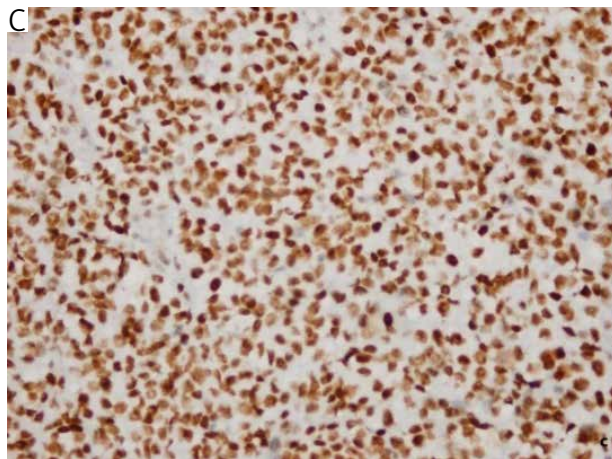
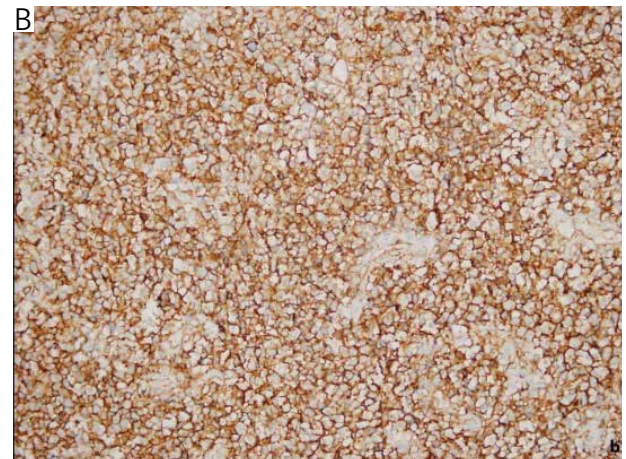
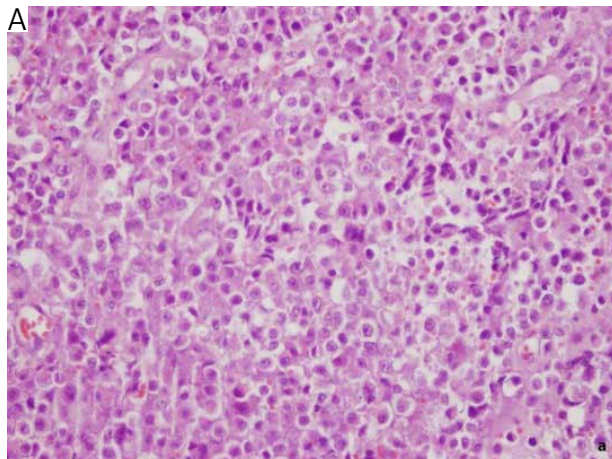
Quiz

WHAT IS YOUR DIAGNOSIS?

A 61-year-old male patient presented to the hospital with complaints of cough and haemoptysis. His past medical history was remarkable for smoking. A chest CT revealed multiple masses, the largest being 3.5 cm in diameter, located in the left lung lower lobe superior segment, pleura, and mediastinum. PET imaging showed multiple masses in the right paratracheal, sub-aortic, right lower paratracheal-carinal area, and left lung lower lobe. Additionally, multiple LAPs in the abdomen and pathological FDG uptake in both scapulae, sternum, vertebrae, pelvis, and femur were detected.

A thoracoscopic biopsy was performed on a 2-cm pleural-based nodule in the left lung lower lobe

of the patient. Macroscopically, the tissue samples, sent in fragmented form, were collectively 2.5 cm in diameter and cream-coloured. Microscopic examination revealed a neoplasm composed of neoplastic cells arranged in discohesive layers, exhibiting epithelioid, undifferentiated, and rhabdoid morphology, with round-oval nuclei, vesicular chromatin, prominent nucleoli, and frequent mitotic activity (A). Gland formation, cytoplasmic vacuolisation, and keratinisation were not identified. Immunostaining showed that the tumour cells were diffusely positive for CD34 (B). No loss of INI-1 expression was observed (C). The Ki-67 index was approximately 90% (D).



GIZEM TEOMAN

Karadeniz Technical University, Faculty of Medicine, Department of Pathology, Trabzon, Turkey

Answers should be sent to the Editorial Office until 13th March 2025. The correct answer will be announced in the next issue of the *Polish Journal of Pathology*.